



FIELD NOTES

The LandTrust for Central North Carolina
P.O. Box 4284
Salisbury, NC 28145-4284
Telephone: 704/647-0303
Facsimile: 704/647-0068

Website:
www.landtrustcnc.org

Field Notes is a midseason newsletter used by the LandTrust to update its contributors on the progress of projects, upcoming events, and news in the office.

McPherson Family Protects Uwharrie Farm

Uwharrie River Property Protected

Three years ago while walking around the Piedmont Triad Farmers Market, Associate Director Kevin Redding struck up a conversation with a farmer selling organic tomatoes. While the impressive display of fruits and vegetables caught his wife’s eye, Kevin’s interest was spurred by the gentleman’s questions about farmland preservation, as well as the name of his farm, Uwharrie Farm. After a few minutes conversing, the farmer, Larry McPherson, asked to set up a time when he and his wife could discuss what options might be available for preserving their farm along the banks of the Uwharrie River. Thanks to funds made available from the N.C. Clean Water Management Trust Fund and the U.S.D.A. Farm and Ranch Lands Protection Program, that conversation has finally ripened into a conservation easement that will permanently protect their beloved farm.

Uwharrie Farm is a conservation jewel. The lowlands comprise over 8,000 feet of frontage along the Uwharrie

River. The property consists of 120 acres of high quality soils. The views from the ridge top look out over the Birkhead Wilderness Area, part of the Uwharrie National Forest. On top of all this, the farm is



Larry and Judy McPherson



Scenic view of the Uwharrie Mountains as seen from the newly protected property.

located in a strong farming community that goes by the name of Farmer. “We’re very pleased to be able to protect a farm with so many conservation benefits” says Kevin Redding. “From the agriculture to

the water resources to the scenic beauty, this farm is really special.”

Larry and Judy McPherson have gone to great lengths to manage their farm in a responsible manner. Since acquiring the land from Judy’s parents in 1987, they’ve honed their skills at raising organic tomatoes. When Judy isn’t tending to the tomatoes, she’s busy in the kitchen baking up organic breads, granolas and other treats. In the summer months they diversify their produce to include peppers, cucumbers, eggplant, watermelons and other favorites.

Given all the hard work they have invested in the farm, Larry and Judy are very excited to see it protected.

(Continued on page 4...)

Table of Contents

- Director’s Letter 2
- RiverDance 3
- Sheets Property..... 4
- Webster Farm..... 5
- Recent Outings..... 6
- Recent Events..... 7
- Upcoming Outings 8
- Donations..... 9-10
- Board Changes..... 11-12

Letter From The Director

By Jason A. Walser, Executive Director

These are exciting times at The Land Trust for Central North Carolina! You will see great projects and events highlighted in this newsletter. However, even more exciting are the incredible conservation projects that have recently presented themselves to us but which we cannot yet make public. All in all, we will be announcing our involvement with more than 13,000 acres of conservation projects within the coming months. These include public park projects, new public game lands, protection of gorgeous places next to the Uwharrie National Forest, expansion of a state park, protection of drinking water supplies, protection of culturally significant landmarks, and protection of visible and important farmland. For the first time ever, we can honestly say that we are working on major conservation projects in each and every one of the ten counties that comprise our region.

None of these projects are occurring because of sheer luck or happenstance. Thanks to the generous support of our donors, we have been extremely busy the past year pursuing these landscape scale opportunities. And, of course, we will be counting on you to continue

your support of this organization in the years ahead as we bring these projects to fruition through fundraising, project management, and expansion of our base of membership.

Yes, these are exciting times for The LandTrust, but in many ways our work is just beginning. While we have recently lost some incredible founding board members whose original terms were completed, we have gained exciting new energy and passion for our cause with the addition of five highly talented new board leaders.

We have also begun the process of trying to expand our base of support through increased public awareness and better marketing. (Look for our exciting new website within weeks!) We have obtained professional assistance in designing a comprehensive planned giving campaign that will allow us to better promote our unique ability to use planned gifts (IRA's, land, stocks, etc.) to create perpetual legacies to serve future generations of North Carolinians. And board and staff are working on streamlining operations to make ourselves more efficient so as to be able to better manage all the exciting projects already on our plate, as well as those unforeseen opportunities

that we know will continue to present themselves.

Obviously, we believe that we are using your investments in this organization wisely to make a lasting impact on the landscape, enhance local economies, and provide more public access to some of our most beautiful and culturally significant lands. We hope that you take pride in the projects that you will be learning about in the months ahead, as they have been made possible only through the generous support of friends **JUST LIKE YOU!**

Thanks for your continued support. We look forward to seeing you at our next outing or event, and to introducing you to the wonderful conservation projects that we will be undertaking in your neighborhood in the years ahead.



RiverDance 2006

Committee

Meredith Reamer

Co-Chair

Sue and John Spear

Co-Chairs

Meredith and Andy Abramson

Rosemary and Bryce Beard

Cindee and Chip Bridges

Suzanne and John Casey

Kay and Raymond Coltrain

Judy and Tom Currin

Frances and Larry Edwards

Nan and Danny Fisher

Kelly and Ben Goodman

Lori and Charlie Graeber

Shari and Bill Graham

Mary Lou Lipscomb

Ann and Bill McCanless

Susan and Edward Norvell

Marcia and Ed Parrott

Gwen and Terry Pendleton

Marjorie and Chance Reynolds

Annette and Hap Roberts

Jody and Clint Robins

Katie Setzer

Betsy and Lee Snow

Julie and Bob Steele

Biana and Andy Storey

Annie and C.D. Taylor

Paula and Bill Troxler

Gwen and Bill Webb

*MARK YOUR CALENDAR
FOR
RIVERDANCE 2006!*

SATURDAY, JULY 29, 2006



HISTORIC SALISBURY STATION

215 DEPOT STREET

SALISBURY, NC

7:00 UNTIL MIDNIGHT

COCKTAILS AT 7:00 P.M.

DINNER AT 8:00 P.M.

(CATERED BY "THE RIGHT TOUCH")

MUSIC AND DANCING BEGINNING AT 9:00 P.M.

(MUSIC BY "FLASHBACK")

LET US INVITE YOUR FRIENDS!

CONTACT THE LANDTRUST AT 704.647.0302

*RiverDance is held annually to benefit land and water protection
in North Carolina's Heartland*

McPherson Article Continued

As Judy tells it, “My parents moved to this farm in 1953 when I was 1 year old. My family and I fished and swam in the river, played in the woods and shared farm chores. The farm is a lovely place that holds many memories for me. A portion of the farm was divided before Larry and I purchased the remaining 120 acres. The fact that The LandTrust has enabled us to preserve this remaining portion for future generations is very special to me.”

By working with The LandTrust to place a conservation easement on the farm, Larry and Judy can rest soundly knowing that Uwharrie Farm will always be much as it is today: a place where fruits and vegetables can be grown in the fertile soil, where cattle can roam the lush pastures, where wildlife can enjoy the forests and fields, where canoers and kayakers can paddle the Uwharrie River, where travelers down Waynick Meadow Road can enjoy the remarkable view, and

where children can learn about agriculture’s past and present.

Stay Tuned For More
Exciting News From The
Uwharries!!!

In our next edition of *Field Notes* we’ll detail our ongoing efforts to protect other lands around the Birkhead Wilderness Area, and the pristine waters of the Uwharrie and Little Rivers.

Sheets Continues Efforts in Iredell County

Bobby Sheets has long been an active supporter of The LandTrust’s work. You may recall that three years ago he donated a conservation easement on his 22 acre historic homeplace in Davie County. Soon after he donated the first easement he had an opportunity to buy a larger piece of land in northern Iredell County. Before Bobby could make his decision about whether or not to buy the land, he first wanted to know if it was something The LandTrust would be interested in helping him protect. After being assured that The LandTrust would be willing to accept an easement on the new farm, Bobby quickly closed and has been enjoying the property ever since.

When Land Protection Specialist Michele d’Hemecourt joined The LandTrust last year, staff advised her that she was fortunate to

have such a wonderful project already waiting for her to work on. The property was a beautiful, 175 acre tract with over one and a half miles of frontage on Hunting Creek. It hosts a heath bluff along Hunting Creek’s banks dominated by rhododendron and mountain laurel. A rare mayfly is known to inhabit the waters of Hunting Creek adjacent to the property. But beyond the characteristics of the property, we mostly knew that the character of the landowner could not be topped.

Thanks to Mr. Sheets’ generous donation of a conservation easement, The LandTrust is now very pleased to have protected these 175 of Iredell County’s most beautiful and ecologically significant acres. The site adds to a growing list of protected properties in northern Iredell County. Its location is approximately 2 miles south of the previously protected Daltonia Plantation and 2 miles east



of the town of Harmony. As Michele can attest, The LandTrust is very fortunate to have such a wonderful property protected by such a caring landowner. “He was motivated simply by the desire to see the property protected,” she states. “Bobby’s property is truly a special place, and he’s taken the necessary steps to make sure that future generations can enjoy the heath bluff, forests, creeks, and wildlife as much as he does today.”

Webster Farm on Iredell/Rowan Line Protected

Don and Betsy Webster own a 40-acre farm in “downtown” Mount Ulla, the agricultural community located near the Rowan and Iredell County lines. The farm’s location also means that they are very close to the Mooresville/Lake Norman region, which consistently ranks among the fastest growing areas in the nation. Given their love for the property and concern about the encroaching development, the Websters have taken the necessary steps to protect their property by donating a conservation easement to The LandTrust.

The Webster’s farm is not your typical corn and soybean landscape as you might expect. Their combined love of animals has led them to open up a “retirement home” for llamas. They now have about 15 of the peaceful creatures roaming their pastures. Elsewhere they have numerous bird feeders where they enjoy watching their feathered friends. In addition, their barn cat, Misty, and family dog, Peanut, have the run of the place.

Though they’ve been retired since the mid-1980’s, they stay plenty busy. They operate a regional

flower business, *Mount Ulla Gardens*, using flowers grown on their farm. They have also restored their home, which was originally built back in 1917.

Don and Betsy’s donation means that future generations will always be able to enjoy the scenic beauty of the farm. Despite all the growth that is rapidly coming their way, they wanted to protect their farm from being subdivided and paved over. The LandTrust is very pleased to have been able to help Don and Betsy protect their lovely piece of Mt. Ulla farm land.



Recent Outings

Bald Mountain Hike

This is more than likely not the first article you have seen about the LandTrust's Bald Mountain Hike on March 19th. *Salisbury Post* photographer John Lakey attended the hike and wrote a spectacular article about the experience. In the following weeks the article appeared in more than a dozen newspapers across the state. Twenty-one LandTrust friends and supporters took part in this magnificent Sunday afternoon hike in southwestern Davidson County along Tuckertown Reservoir. Bald Mountain is located along the eastern shores of Tuckertown Reservoir. Public access to Bald Mountain is not only allowed, but encouraged.



Uwharrie Wildflower Hike



While Boon Chesson might be aware of the famous phrase of Smokey the Bear, "Only you can prevent forest fires," he certainly doesn't abide by it. In fact, he downright ignores it. He intentionally sets his 112 acre property on fire! The prescribed burns Boon conducts on his property has helped restore a long lost ecosystem of North Carolina, the Piedmont Prairie. On Sunday May 6th a group of twenty-five gathered at Boon's property in Montgomery County, just outside of Troy. The group led by North Carolina Zoo Horticulturalist, Pete Diamond, explored the land while they searched for the spring wildflowers of the Uwharries. You can even find the federally endangered Schweinitz's Sunflower (*Helianthus schweinitzii*) here.

South Yadkin Canoe Trip

The LandTrust keeps rollin', rollin' down the river. This time twenty paddling enthusiasts, outfitted by the Uwharrie River Company out of Mount Gilead, put in on the South Yadkin River at US-601 at the Rowan – Davie County line and began to paddle into the core of the LandTrust's Two River Preserve. A pursuing thunderstorm helped encourage the group to paddle a bit faster. A brief shower cooled things off as they approached the heath bluffs of the LandTrust's protected 300 acre South Yadkin Wildlife Refuge. By the end of the trip the group passed 787 acres of Gamelands, 580 acres of LandTrust protected properties, and 435 acres of potential land projects. All twenty paddlers made it to the take out at the Pump Station on Hannah's Ferry Road before the heavens opened up. If you are jealous you missed this river trip, don't fret, check out our upcoming trip down the Uwharrie River on Page 8!



Recent Events

Heartland 100 Event

This year's Heartland 100 Appreciation Event, "Blue Jeans, Barbeque, Beer and Blue Grass!" was held on April 25 at the barn on the Bittering Farm, a LandTrust protected site on the Two Rivers Preserve. Over 70 people attended the event and enjoyed Delmar's Chicken and music by the Stanly County Boys. LandTrust event coordinators Meredith Reamer and Marjorie Reynolds decorated the barn and grounds with magnificent floral arrangements. Connor Coleman, Stewardship and Land Conservation Coordinator, was available for tours of the bottomlands.



Bob Bailey



Bob Bailey

Cabarrus County Event at Liles' Farm

On Thursday evening, May 4, Betsy and Jock Liles graciously opened their picturesque Mt. Pleasant farm for a barbeque to introduce the work of The LandTrust. Over 60 guests attended and learned about upcoming land protection projects in the Cabarrus County region. We would like to extend our sincere appreciation to Betsy and Jock; and event cohosts Vanessa and John Bishop, Alice and Sam Davis, and Peg and John Morrison. Kudos also to The LandTrust's Special Event Coordinators Meredith Reamer and Marjorie Reynolds, who set the tone with lovely floral arrangements. At twilight, neighboring cows ambled across the pasture bringing the event to a close. We couldn't have scripted it any better!





Upcoming Outings



August 11, 12, 13—Star Gazing in Stanly County

Kellie Pickler isn't the only star to be seen in Stanly County. Join the LandTrust and see some shooting stars! The Perseids meteor shower is a spectacular event that displays every August. Come join the LandTrust for a late afternoon hike at Morrow Mountain State Park, followed by a barbeque dinner, and when the sun goes down the show begins! Bring your sleeping bags and tents and stay the night if you'd like and watch the spectacle atop the Historic Michael Farm which overlooks the state park and has little light pollution for optimal viewing. Finalized date to be determined the week of the meteor shower since weather is a key factor in star gazing. Contact Connor@landtrustcnc.org to be on notification list.

September 9—Creepy Crawly Walk

Come out to the 189 acre Ecological Preserve on the Catawba College campus as we make our way through the trails and wetlands in search of salamanders, turtles, and frogs! Put on your rubber boots and join The LandTrust as we partner with the Catawba College Center for the Environment on this fun event. Follow amateur herpetologists David Burman and Jill Varkes as they lead a hike in search of nature's slimier creatures. Great for young and old alike! Please RSVP for this trip.

October 28—Uwharrie River Canoe Trip

The fall leaf color change will be at its peak, the mosquitoes will be gone, and The LandTrust invites you to come explore the tranquil Uwharrie River with us. We will paddle past thousands of acres of National Forest and LandTrust protected property as the forest puts on a spectacular display of yellows, oranges, and reds. This trip will fill up quick so RSVP early and pack your camera, binoculars, and an extra dry set of clothes as we venture into one of the most beautiful parts of Piedmont North Carolina!

November 27—4th Annual Salisbury Greenway Tree Lighting

Come one and all and celebrate the holiday season with The LandTrust! Join us at 5:00 at the Overton School entrance of the Greenway as local schoolchildren decorate trees with handmade natural ornaments. Enjoy refreshments as we sing carols and watch the sun set over the LandTrust protected Ecological Preserve.

December 9—Uwharrie Hike

Come out and work off some of those holiday cookies as we hike part of the Uwharrie and Dutchman's Creek Trails in the Uwharrie National Forest. Less than an hour and a half from Salisbury, Charlotte, the Triad, and the Triangle, the Uwharries are a great escape to nature and offer some breath taking views. This hike will be strenuous; we will be hiking 9 miles over mountainous terrain. So bring some water, pack a lunch and lace up your hiking boots for this wintertime hike through the Uwharrie Mountains.

****For more information on these events contact Connor Coleman at connor@landtrustcnc.org**
Page 8 Field Notes

Your Gifts Support Our Conservation Work

Your donations will allow us to continue "Saving the Places You Love" in the Piedmont Region. The following are new or renewing members from January 1, 2006 through June 15, 2006. Every effort has been made to ensure that these names are correct. Should there be an error, or if you have questions or comments, please contact us at 704.647.0302.

Heartland 100 (Golden Oak) \$5,000 and up

Mr. and Mrs. William Marc Graham
Ms. Amy Grissom and Mr. David I. Cohen
Mr. and Mrs. Fred Stanback, Jr.
Mr. and Mrs. William C. Stanback

Heartland 100 (Dogwood) \$1,000 - \$2,499

Mr. and Mrs. Ronald E. Chaney
Mr. and Mrs. Robert L. Cook, Jr.
Ms. Ruth Ann Grissom and Dr. Marcus Plescia
Mr. Peter Wilson Hairston
Mr. and Mrs. Robert Hazen
Dr. and Mrs. Dennis L. Hill
Mr. and Mrs. Gordon Pannill Hurley
Mr. and Mrs. James Franklin Hurley III
Mr. and Mrs. James R. Mauney
Mr. and Mrs. Edward Proctor Norvell
Shaver Wood Products
Mr. Bobby C. Sheets
Mr. and Mrs. Jerry F. Smith
Mr. and Mrs. Mark Steven Smith
Mr. and Mrs. Robert B. Smith, Jr.
Statewide Title, Inc.
Mr. and Mrs. Mike Walter
Mr. and Mrs. Dan R. Williams

\$500 - \$999 (Benefactor)

Mr. and Mrs. Robert L. Cook, Jr.
Mr. and Mrs. J. Keith Crisco
Dr. and Mrs. Arthur Harberts
Dr. and Mrs. Louis Kandl
Mr. and Mrs. Ross William McCanless
National Starch and Chemical Foundation
Ms. Janice Query
Mr. Bruce Ross Rufty
Mr. and Mrs. C. H. Timberlake, Jr.
Wallace Realty Company

\$250 - \$499 (Patron)

A Step in Time
Mr. Jack Errante
Mr. and Mrs. Chalmers L. Glenn
Mr. and Mrs. Joel Shelton Harper
Ms. Martha M. Hawkins
Mrs. John Harris Morrison
Mr. and Mrs. Robert E. Pruehsner
Reverend George Slaton
Dr. and Mrs. Charles Steinman
Mr. and Mrs. Kenneth E. Vaughn

\$100 - \$249 (Sustaining)

Mr. and Mrs. Ralph L. Baker
Dr. and Mrs. Ronnie Barrier
Mr. and Mrs. Clarence B. Beaver, Jr.
Mr. Edward E. Birkinshaw, Jr.
Mr. and Mrs. Steve Blount
Mr. and Mrs. Allen D. Cook
Dr. and Mrs. Frederick Mast Dula, Jr.
Mr. and Mrs. Keith D. Gapen
Mr. and Mrs. Dale E. Gentle
Mr. and Mrs. Buddy Gettys
Dr. and Mrs. Joel S. Goodwin
Ms. Margaret F. Grigg
Dr. and Mrs. Richard D. Jordan
Dr. and Mrs. Douglas Kelling
Dr. and Mrs. James Hardin
Mr. and Mrs. T. Burt Harris
Mr. and Mrs. Robert C. Hinkle, Jr.
Mr. John T. Hudson
KKA Architecture
Mr. and Mrs. J. Don Kopley
Mr. and Mrs. Glenn Elwood Ketner, Sr.
Mr. and Mrs. Thomas R. MacMillan
Ms. Janet Magaldi
Mr. William Mayberry
Mr. and Mrs. J. Foster Owen
Mr. and Mrs. Alexander M. Patterson
Mr. and Mrs. Charles A. Peacock
Mr. and Mrs. Branson Pethel
Mr. and Mrs. Ricky Joe Reich
Mr. Kent Roberts
Mr. and Mrs. David C. Shaver
Reverend and Mrs. Banks Sheperd
Mr. and Mrs. Dan G. Smith

Ms. Betty Dan Spencer
Dr. and Mrs. Charles Stineman
Mr. Chris H. Verner
Dr. and Mrs. William Whitaker Webb III
Dr. and Mrs. Edwin G. Wilson
Mr. and Mrs. H. Darrell Young

\$50 - \$99 (Family)

Mr. and Mrs. Robert W. Bailey
Mr. and Mrs. Rick Barrier
Mr. and Mrs. Kent Beck
Mr. and Mrs. Thomas C. Childress
Mr. and Mrs. Bucky Cline
Mr. and Mrs. Thomas Coble, Jr.
Miss Lillian Heitman Gascoigne
Mr. and Mrs. Walter H. Gordon
Ms. Laura Matheson Gresham
Mr. Clyde H. Harriss, Jr.
Mr. and Mrs. John V. Highfill
Mr. and Mrs. Robert C. Hinkle, Jr.
Mr. and Mrs. Hoyle Holland
Mr. and Mrs. William C. Isenhour
Mr. and Mrs. Timothy C. Klaus
Mr. and Mrs. Larry R. Layton
Reverend and Mrs. I. Mayo Little
Mr. and Mrs. William J. McCoy
Mr. and Mrs. Thomas R. MacMillan
Dr. and Mrs. Richard W. Martin
Mr. and Mrs. James M. Monroe, Jr.
Mr. Edward J. Mulvey and Ms. Julia B. Riddle
Mr. and Mrs. Tim McCree
Mr. and Mrs. Edgar Miller
Mr. and Mrs. Enoch A. Nussman
Mr. and Mrs. David Parker
Mr. and Mrs. John T. Peeler
Dr. and Mrs. Roger L. Roark
Ms. Myra J. Scarboro
Mr. and Mrs. Michael Shadroui
Mr. and Mrs. Larry Shaw
Mr. and Mrs. James A. Sparks, Jr.
Mr. and Mrs. Maxwell K. Spear, Jr.
Mr. and Mrs. Dennis E. Testerman
Mr. and Mrs. Walter Wall
Reverend and Mrs. Jerry P. Wilkes

(Continued on Page 10)

Donations Continued...

\$35 - \$49 (Individual)

Mrs. Jacob Franklin Alexander
Mr. and Mrs. Harold G. Belk
Ms. Claudia Blair Bulthuis
Mr. Wayne M. Cline
Mr. and Mrs. James C. Cowden
Ms. Melissa Eller and Mr. Steve Shive
Mr. Alton Louis Eubanks
Mr. and Mrs. Ezra C. Gilliam
Mr. and Mrs. Brian Kautz
Mr. Kenneth B. Knight
Ms. Kimberly Lane
Mr. and Mrs. Tim McCree
Mr. and Mrs. Bynum H. Phillips, Jr.
Mr. and Mrs. Clifton Pickett
Ms. Doris Porter
Ms. Elizabeth V. Rankin
Dr. and Mrs. A. R. Riggs
Mrs. Gordon Scott, Jr.

Mr. and Mrs. D. Wayne Shepherd
Mr. and Mrs. Charles Sherrill
Mr. Charles Robert Thurston
Mr. Greg Talbott and Ms. Jean Vollrath
Ms. Juanita Bouser Teschner
Ms. Jewel Wolfe Ziprik

Special Stewardship Gifts

Mr. John Holton
Mr. Bobby C. Sheets
Mr. William K. Templeton
Mr. and Mrs. Donald C. Webster, Jr.

Gift Memberships

Mr. Bernard Arthur and Ms. Molly Vanhoy
Ms. Juliah Smith

Honorariums

In honor of Elizabeth Iwaoka
Dr. Robert Iwaoka

In honor of Boone Richard Redding
Mr. Charles R. Coble

Memorials

In memory of James Cashion
Mr. and Mrs. Ray Raymer, Jr.

In memory of Mary E. Cuthrell
Mr. Hiram Cuthrell

In memory of Mr. and Mrs. Klynt Ripple Mr. and Mrs. Sherman Cook

In memory of Mr. Carroll Suther
Mr. and Mrs. Ray Raymer
Mr. and Mrs. Ray Raymer, Jr.

Retiring Board Members

The following original board members have recently completed their terms of service:

Peter Hairston – Davie County
Lislott Harberts – Iredell County
Dr. David Jones – Randolph County
Janet Magaldi – Cabarrus County
James Mauney – Stanly County

These individuals have offered much of their time and talents to developing this organization from its infancy. While their passion and commitment will no longer serve on our Board, we rest soundly knowing that each will continue to maintain their positive impacts on The Land-Trust. From the staff, fellow Board members, and new Board members, we thank these five outstanding individuals for all of their tireless efforts on our behalf.

Check Out Our Newly Designed Website!!!

Our address is still the same (www.landtrustcnc.org), but that's about all. Thanks to the help of Kathryn Clifton of Salisbury, The Land-Trust is very excited to unveil our newly redesigned webpage on August 1st! We hope you'll find the new site much more user-friendly. The new site will contain all newly updated organizational information, a recurring update on upcoming events, lots of pretty pictures from our protected sites, and links to other conservation groups around the state. Please take a moment to visit our site, we'd love to hear your thoughts.

New Board Members

The LandTrust is very pleased to welcome five outstanding individuals to our Board of Directors. Each brings an individual wealth of knowledge and passion for our work. We look forward to working alongside of them in the exciting times to come. For more information on these individuals please visit our new website (www.landtrustcnc.org).



David Burman, Rowan County



Lindsey Dunevant, Stanly County



John Hart, Rowan County



John Peeler, Davie County



David Simmons, Rowan County

New Officers

The LandTrust's Board of Directors recently voted on a new slate of officers for the coming year. The new officers are as follows:

Dan R. Williams—President
Edward P. Norvell—Vice President
H. Franklin Sherron, Jr.—Secretary
Dyke Messinger—Treasurer

We look forward to an exciting year under the leadership of these four individuals.

Staff Update

Crystal Cockman has recently joined The LandTrust staff as our new Uwharrie Conservation Specialist. Crystal is a 2006 graduate of the Duke University Nicholas School of the Environment where she earned a Master's Degree in Environmental Management. She has previously completed a Stanback Internship with The LandTrust. Crystal will be working out of our Uwharrie Office in Asheboro where she will assist with land conservation activities in the Uwharrie region.

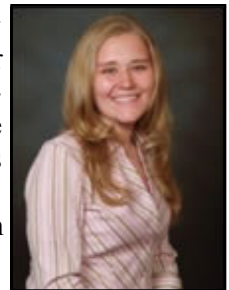




Photo of *Sarracenia flava*, yellow pitcher plant, taken in Richmond County, NC. Pitcher plants occur along an ecologically important corridor of the Pee Dee River. The LandTrust is partnering with several state and local agencies in an attempt to protect these significant natural communities.

THE LANDTRUST FOR CENTRAL NORTH CAROLINA

The LandTrust is a private, nonprofit organization working with private and public landowners to protect the special natural areas, family farms and rural landscapes of Anson, Cabarrus, Davidson, Davie, Iredell, Montgomery, Randolph, Richmond, Rowan and Stanly Counties. With 501 (c) (3) status, all donations to The LandTrust qualify for maximum tax deductions. **The LandTrust receives no tax money from any source for its operations.**

BOARD OF DIRECTORS

Dan R. Williams, President
Edward P. Norvell, Vice President
H. Franklin Sherron, Jr., Secretary
Dyke Messinger, Treasurer
Moni C. Bates
David Burman
Darryl Corriher
J. Keith Crisco
Lindsey Dunevant
Amy Grissom
John Hart
Jeffrey D. Michael
Peg Knox Morrison
John Peeler
David Simmons

BOARD OF ADVISORS

Joe Adams
Robert C. Allen
Raymond D. Coltrain
J. Myrick Howard
Margaret H. Klutz
John Lentz
Joseph McDonald
David Springer
Alice Stanback
Fred Stanback
William C. Stanback
Charles E. Roe
Roberts E. Timberlake

STAFF

Jason A. Walser, *Executive Director*
Kevin Redding, *Associate Director*
Barbara Martin Lawther, *Director of Development*
Michele d'Hemecourt, *Land Protection Specialist*
Connor P. Coleman, *Stewardship and Land Conservation Coordinator*
Crystal Cockman, *Uwharrie Conservation Specialist*



P.O. Box 4284
Salisbury, NC 28145
704-647-0302

Saving The Places You Love

Non-Profit Org.
U.S. Postage
PAID
Salisbury, NC
Permit No. 111