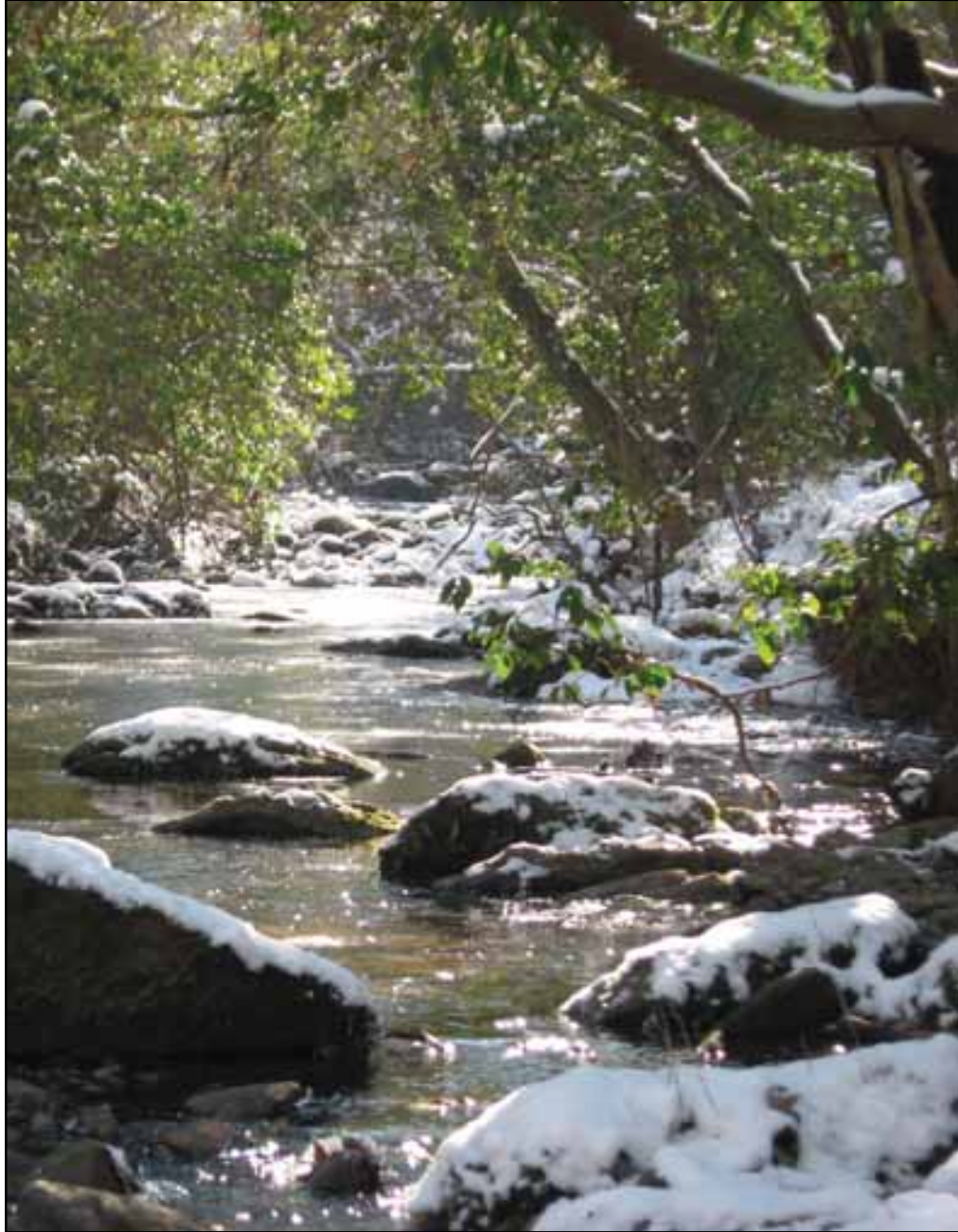




THE LANDMARK

WINTER 2009



Wintertime in the Uwharries—Snow-covered Barnes Creek

Inside this issue:

- Letter from the Director
- A Year in Review
- Land Protection Projects
- Previous Hikes and Events
- Upcoming Outings and Events
- Thanks to Our Supporters
- Conservation Connections
- Board Member Profiles

LETTER FROM THE DIRECTOR

"The strongest oak of the forest is not the one that is protected from the storm and hidden from the sun. It's the one that stands in the open where it is compelled to struggle for its existence against the winds and rains and the scorching sun." - Napoleon Hill (1883-1970)



Executive Director, Jason Walser

Despite many challenges, these are good times for The Land Trust for Central North Carolina. Yes, many of our donors are Wachovia and Bank of America shareholders; and, yes, state and federal conservation funds appear to be on the chopping block as our governments try to balance budgets; and yes, foundations are going to give less this year due to stock market performance; and yes, many supporters in our region have lost their jobs. But times are still good for us, and we are ready to have a successful year of conservation in the Southern Piedmont of North Carolina. Our Board of Directors has committed to this reality; our staff is preparing for it; and our grandchildren's children demand it.

Despite the uncertain financial times, we are seeing more land conservation opportunities than ever before. We get phone calls regularly from landowners hoping we can purchase important land or conservation easements from them. There is a federal tax incentive for donated conservation easements through 2009 which is the most favorable incentive for such donations in tax policy history. Our neighbors are using our parks and national forests in greater numbers as they stay closer to home, and they are recognizing the need to expand and improve them. And land prices appear to be dropping in parts of our region.

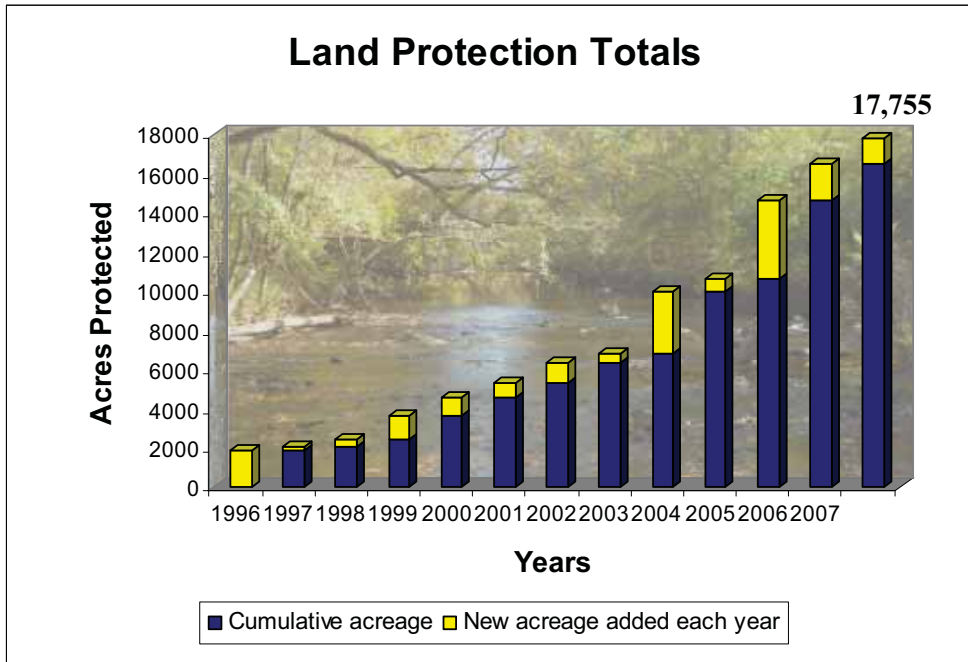
It is indeed going to be a challenging year for us all. But if we do not do everything we can to step up to the plate during this unique period of American history, we will be kicking ourselves a few years from now when this economic cycle has turned. That's because our time frame for effectiveness is measured in perpetuity. That is, The LandTrust for Central North Carolina is in the business of forever, and when you take on such an ambitious time frame, you don't have the option of "hunkering down" during economic downturn.

So how are we positioning ourselves to take advantage of such opportunities when resources are so scarce? By working in new ways, more strategically and more efficiently. We are already short staffed, but we will continue to cut every possible expense out of our budget, and this year's budget as approved by our business savvy board of directors is nearly 20% lower than last year's. We are preparing new special events to reach donors in communities where we have not been as active in our fundraising, and we are preparing a promising new planned giving campaign. We will be spreading the message to landowners who love their land that this organization is uniquely qualified to not only protect their land in perpetuity, but also to use it to save other land in their region. We will show investors who have had their dividends cut from investments how charitable lead and charitable remainder trusts can help them turn otherwise low performing assets into high yield streams of cash flow that ultimately help us with our conservation work.

We will also be working on finding more conservation minded investors, who will buy properties we might have wanted to buy ourselves but cannot afford. Such conservation buyers will put easements on high priority properties and recognize the tax benefits, ensuring the property's ecological values are permanently protected. And we are promoting our "trade lands" program, whereby banks, developers, or private property owners can donate non-conservation properties they cannot sell themselves and reap substantial tax benefits. We will hold such properties for a few years as the economy improves and then re-sell them with proceeds going towards buying nearby properties with high conservation values.

Yes, we are working our hardest to ensure that when this storm is over, we will be standing strong. But more importantly, we are working to ensure that we capitalize on temporal opportunities to save some of the best landmarks of our region that we might not ever get the chance to protect again. Thank you for standing strong with us to make a difference for those who will follow in our footsteps.

Land Protection Update - 1,303 Acres Conserved in 2008!

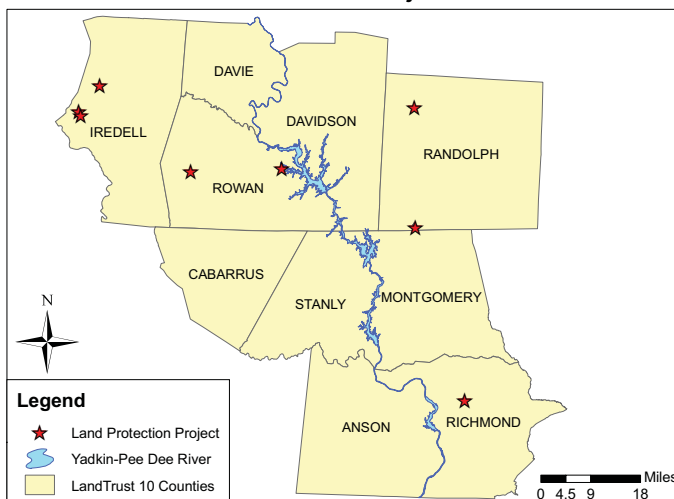


Each new year marks a time to pause and reflect on the projects of the previous year. Most notably, those that have closed - land that has been permanently protected. But as staff rushes to get year end project's closed, we also get to monitor all the great properties protected in years past. Visiting these sites is a wonderful reminder of the important areas that are already saved, from beautiful rolling Stanly County farmland, to challenging hikes in the Uwharries, to gorgeous bottomlands on the South Yadkin River. The 10 county area The LandTrust covers is an expansive one, full of a diversity of ecosystems and resources. This year, perhaps more so than previous recent ones, shows how truly diverse our protection efforts are.

This year saw the completion of several projects, including our first ever in Richmond County. The LandTrust covers a small portion of this county within the Yadkin-Pee Dee watershed, but had not completed a project here until this year. This easement is already driving more interest in this important and unique area.

Yearly monitoring visits also allow us to take a moment to talk to the landowners who have saved their land, whether last year or ten years ago, and experience afresh how important that decision is to them, and to all of us. Hearing their story is a rejuvenating and enriching experience every time. From the projects that closed this year to all the projects of previous years, each one has its own great history, and a future sure to be just as rich thanks to landowners who had the foresight to preserve it. Thanks to you all for saving the places we love in the Piedmont of North Carolina!

LandTrust for Central NC - Projects Closed in 2008



Brothers Reid and Kenneth Gray Protect Iredell County Farmland

Drive just two miles north after exiting Interstate 40 on scenic Old Mountain Road in western Iredell County and the Brushy Mountain range jumps out at you in all of its beauty and grandeur. And when you first spot them, you will likely be viewing them across land owned by Reid or Kenneth Gray, two brothers who have accumulated some of the best farmland in Iredell County over the course of their farming lives.

In a truly unique and special fashion, both brothers have donated conservation easements on two of their gorgeous properties in 2008, preserving scenic vistas, some of the region's best farmland, and important wildlife habitat for future generations to enjoy.

Kenneth and his wife, Becky Gray, donated a conservation easement on 126 acres at the intersection of Old Mountain Road and New Sterling Road which is



Rolling agricultural fields are abundant on the newly protected farmland.

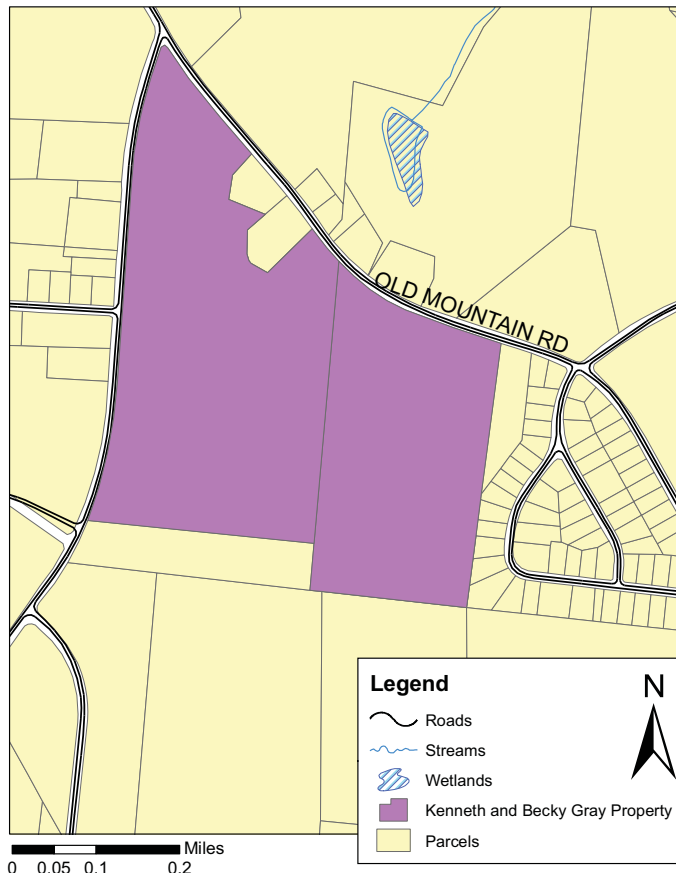
comprised largely of crop fields and some hardwoods. The property is situated prominently behind the historic Gray House (owned by Reid and Peggy Gray), which was built in 1905 and was previously used as a bed and breakfast. The land is used primarily for small grain production, and provides scenic relief from

the adjoining subdivision to its south. Views of the Brushy Mountains can be had from any number of vantage points from these fields which also serve as the back yard of Kenneth and Becky Gray.

Kenneth had been thinking about a conservation easement for several years before he and Becky decided to go ahead and make the commitment. Becky was an instrumental force in helping Kenneth take the action that she knew he wanted to take in conserving his land. This particular tract of land has great historic significance, having originally been owned by early settlers protected by the historic Fort Dobbs British outpost.

The 130 acre property protected by Reid and Peggy is located several

Kenneth and Becky Gray Property



miles north of their homes on the South Yadkin River. It is a beautiful, mostly wooded tract managed for wildlife and some timber production. With more than one mile of frontage on the South Yadkin River, this conservation easement will protect the drinking water supply of the City of Statesville, which is located just a couple of miles downstream. The South Yadkin River corridor in Iredell County has been a corridor of interest for The Land Trust since our inception. To date, we have protected more than 3,000 acres along the South Yadkin in Rowan, Iredell, and Davie Counties.



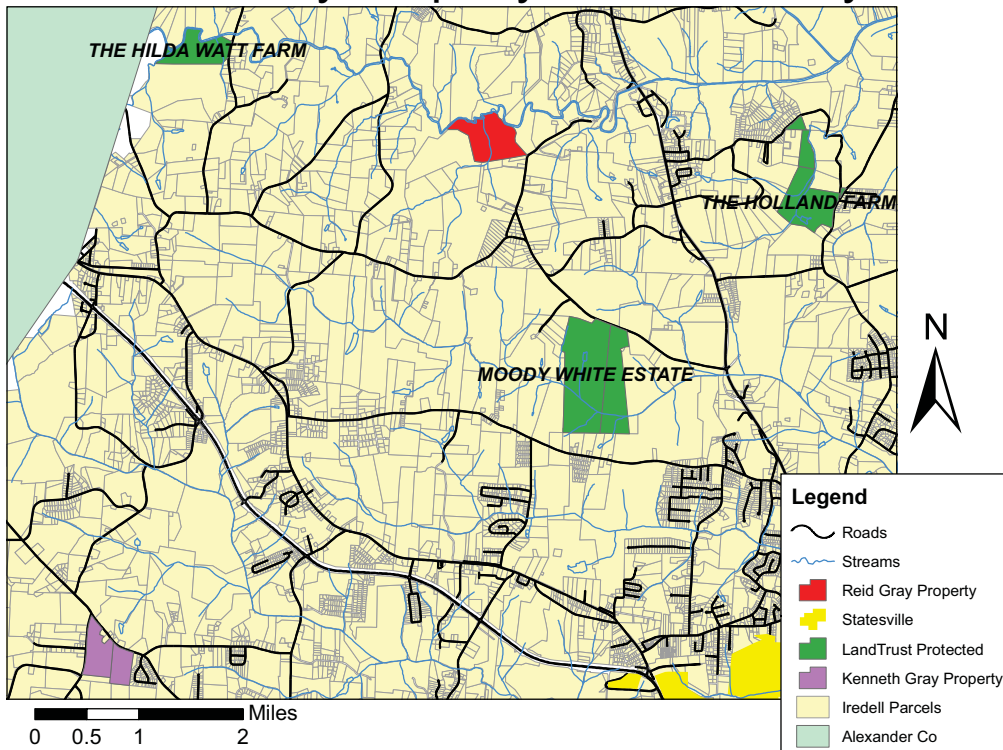
Reid and Kenneth Gray on their family farm in Iredell County.



Beautiful farmland and prime farm soils.

The property boasts abundant wildlife and high value hardwood forested buffers along the South Yadkin. Named “Cove Creek Farm,” the tract is situated less than six miles north of Statesville just off scenic Highway 115. The Gray brothers and their families are two of the most respected farming families in Iredell County. Their unselfish donation of conservation easements on these two farms will benefit wildlife, water quality, food and timber production, and the aesthetics of the northern Iredell community for many generations to come.

Reid Gray Property, Iredell County



First Richmond County Project— The Webb Farm Conserved

As you drive down interstate 73-74 and cross into Richmond County, it's almost like you've entered a different world. Transitioning from the Uwharries, you're leaving the rugged terrain of granite outcrops and rocky bedded streams, into a world of flat lands, sandhills, fox squirrels, pygmy rattlesnakes, and wiregrass. The land of the longleaf pine. This is truly a portion of our region unlike the rest, unique and beautiful. And now thanks to Bill Webb, 115 acres of this picturesque setting is permanently protected by conservation easement. In fact, the entire Webb Farm, which encompasses more than a thousand acres, is situated directly on this transition area, and possesses both Uwharrie type ecosystems, with mountain-like streams, and sandhills ecotones, with longleaf pine and flat lands.



Restored longleaf pine on part of property.

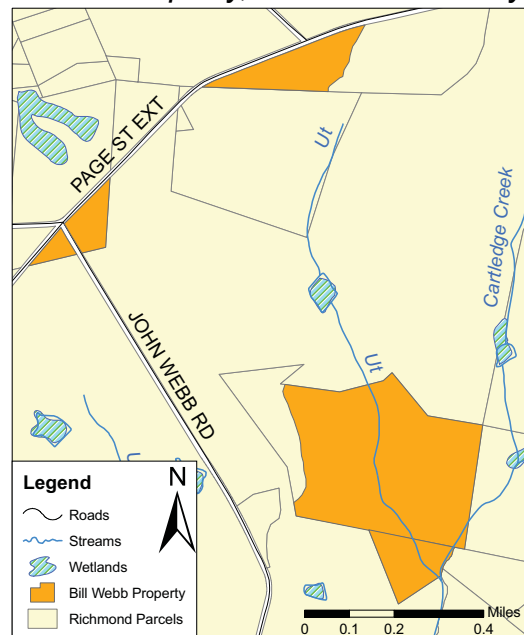
Bill Webb, an attorney in Rockingham, was raised in a hunting tradition, and has worked hard to manage his historic family farm as a hunting preserve. In addition to restoring longleaf pines, he actively manages for quail habitat with prescribed burns. Not surprisingly, his excellent wildlife management efforts garnered him the title of WRC Small Game Conservationist of the Year in 2004. The Webb Farm has been featured in *Business North Carolina*, the *Upland Gazette*, and the *Progressive Farmer*, which states that "Webb has worked diligently on his wildlife habitat, and it's paying off for him." The hunting here has been featured on ESPN and OLN. This easement protects the current uses of the property and restricts development, allowing no home sites. The property has a beautiful hunting lodge on an adjacent tract.



The Webb Farm has a strong tradition of habitat restoration and management.

"As a wildlife conservationist and habitat manager, Bill Webb is a great model and leader in conservation efforts in this area," says Crystal Cockman, Uwharrie Conservation Specialist with The LandTrust. "The LandTrust is very excited to have closed its first easement in Richmond County, and couldn't have asked for a better landowner to work with or a more ideal project. From the conversion of a tobacco farm into a recreation-based hunting preserve, to the restored longleaf and excellent management practices, this easement has everything you could ask for in a project." This easement is a wonderful example sure to open doors to more conservation here in the future.

Webb Property, Richmond County



Conservation efforts multiplied— Bevan Property Conserved

If the name Ricky Bevan sounds familiar, it's for good reason. He is one of the three partners who owned the King Mountain Property, purchased by The LandTrust in April of this year, and was truly instrumental in seeing that important property protected. The King Mountain Property was a crucial acquisition, as it provides a critical link in the Uwharrie Trail, possesses natural heritage elements including the federally endangered Schweinitz's sunflower, and also houses a tributary within the Barnes Creek outstanding resource watershed.

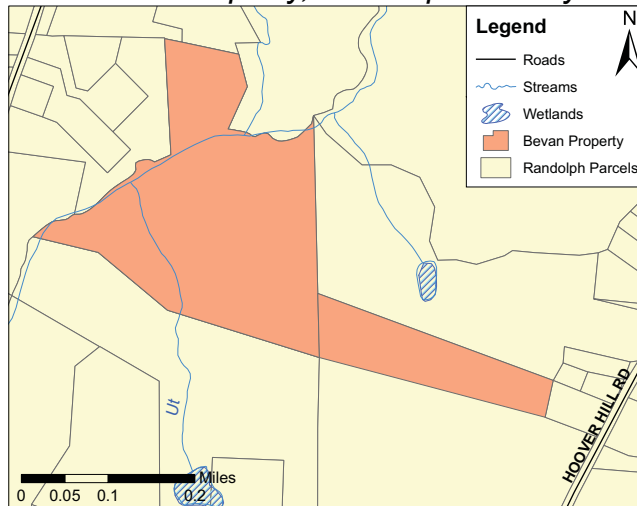


Beautiful waterfall on Uwharrie tributary

After Ricky sold his interest in King Mountain, he took the money and bought a tract beside the property where he lives in the Trinity area of Randolph County, and knew immediately what he wanted to do with it – preserve it. This year's donation of 50 acres is actually adjacent to this newly purchased tract, and has three tributaries to the Uwharrie River and hardwood forests. Ricky and his wife, Kay, plan to donate an easement on the newly acquired portion next year, and include with it about thirty acres adjacent to his residence, which has a beautiful rocky stream and pond on it. In total, they will have protected over 130 acres.

A quick drive around this area reveals a beautiful landscape of Uwharrie Mountains. In the fall the reds, oranges and yellows brighten the landscape, with rolling

Bevan Property, Randolph County



hills around every bend in the road. But the area's close proximity to High Point and Winston-Salem threaten this gorgeous landscape, as this area of Trinity is facing increasing development pressures. But there are a few landowners here who are working hard to keep it beautiful. Ricky's property is near the protected John Holton Farm, 244 acres with a historic home, forests and fields. Other landowners and farmers in the area have also expressed interest in conservation easements.



An old chimney marks the remains of a historic house once found on property.

Dunn's Mountain Nature Walk



Over 40 LandTrust supporters came out to see and hear the history of Dunn's Mountain Park.

On November 16th, a delightfully warm and clear fall day, about 45 people joined The LandTrust for an interpretive hike and behind-the-scenes look at Dunn's Mountain Park, part of the Rowan County Parks and Recreation system. The hike was led by longtime LandTrust supporter and local naturalist Bob Pendergrass, supervisor of the Nature and Learning Center at Dan Nicholas Park.

Bob regaled the crowd with tales of the natural and human history of Dunn's Mountain, which has been associated more with the quarrying operation that has eaten away a small portion of the mountain face in recent years but also contains some extremely rare geologic structures and plant communities. But the highlight of the hike was at the newly constructed observation tower on top of the mountain, where the hikers were treated to a spectacular 360-degree view featuring the Uwharries to the southeast, the Sauratown Mountains to the northeast, and the Brushy and Appalachian Mountains to the northwest. And, of course, the view of downtown Salisbury three miles away was amazing.

The LandTrust for Central North Carolina played a key role in the creation of Dunn's Mountain Park, purchasing the 82-acre property in a bargain sale from the Dunn's Mountain Pink Granite Company in 2001. In 2005 the property was transferred to Rowan County, which opened it as a public park facility in 2006. The LandTrust wishes to express its sincere thanks to the Rowan County Parks and Recreation Department and especially Bob Pendergrass, our dear friend and great supporter, for hosting this great event.



Bob Pendergrass gave a compelling overview of the park and the history of its protection.

Heartland Uwharrie Bus Tour

Temperatures rose into the low 70s as Heartland 100 members and members of the Board of Directors loaded onto a bus for an afternoon excursion into the Uwharrie Mountains on October 23rd. Departing from the LandTrust offices in Salisbury in the early afternoon, the bus made its way towards Montgomery County.

After a short stop for snacks and drinks at the Eldorado Outpost, the bus traveled deep into the Uwharrie National Forest. The tour visited numerous historical land marks in the region. One of the first stops was at the Low Water Bridge, where The LandTrust owns 1280 acres of nature preserve on the Uwharrie River. The next stop was the historical Jumpin' Off Rock, located on United States Forest Service Property, with a great view of Barnes Creek. Another stop included the Pisgah Covered Bridge, which is one of the last covered bridges left in the state, with property here owned by The LandTrust and Zoo, and faithfully maintained by the local community.

At each location, the passengers were encouraged to exit the bus and explore the unique ecology found only in the Uwharries. The emerging reds, oranges, and yellows of the fall foliage, and the crisp fall air, provided a beautiful backdrop for the pristine Uwharrie River and its numerous tributaries.



Heartland members stop to check out the view at the Jumpin' Off Rock.

The travelers were treated with a lecture by Dr. Gary Freeze, a history professor at Catawba College, on the history and sociology of the Uwharrie region. Dr. Freeze incorporated geography, migration, politics, and economics to paint a picture of the region. He also provided links between the Uwharries and Rowan County. Guests were treated to drinks and light hors d'oeuvres at the Pisgah Covered Bridge as the sun set over another glorious fall day in the Uwharries.



LandTrust supporters take a break and photo opportunity at the Pisgah Covered Bridge.

Ornament Making at Green Goat Gallery in Spencer

On Saturday, December 6, Anne and Andrew Waters graciously opened their Green Goat Gallery in Spencer for the 2nd annual LandTrust Ornament Workshop. Children and adults gathered and put their creative abilities to good use as they made holiday treats for wildlife. Among the treats were Pine-tastic Pinecone Feeders, Birdy Bagles, and hand-strung cranberry garland. LandTrust volunteers had peanut



Eli Waters has fun decorating and then devouring this delicious treat during the event.



Attendees created natural ornaments for use at our LandTrust Tree Trimming on Sunday.

butter, bird seed, cranberries, shortening, bread, bagles, and raffia available for workshop participants.

After preparing yummy treats for birds and other wildlife, it was time for the workers to enjoy a treat of their own! Anne Waters supplied giant gingerbread men, and the children were allowed to decorate them with icing, gumdrops and sprinkles!

Tree Trimming in Centennial Park

On Sunday, December 7, LandTrust staff and volunteers met in Fulton Height's Centennial Park to decorate for wildlife. A stately fir tree was festooned with cranberry garland and adorned with colorful ornaments. The fir was planted by The LandTrust to honor Fulton Heights resident Maggie Blackwell, who was instrumental in making Centennial Park a reality. A very jolly Santa and Mrs. Claus made a surprise visit to help the children decorate. Mayor Susan Kluttz was also present to help spread holiday cheer! In

spite of the chilly temperature, spirits were high and tidings of joy were felt by all.



Kids were surprised by a special visit from Santa and Mrs. Claus!



The park received a newly planted tree and the birds enjoyed the delicious ornaments!

LandTrust Annual Open House

Always a popular event, this year marked the third annual LandTrust Open House, and it was the biggest yet - with over 70 people in attendance! Friends and supporters enjoyed socializing with staff and board members at our main office in the Historic Salisbury Train Depot. The Open House is an informal event and allows us the opportunity to talk about upcoming events, hikes and land protection projects. From easement donors to committee members a variety of folks got to know one another and The LandTrust better. Hope to see you there next year!



Guests enjoyed good food and fellowship at the third annual LandTrust Open House.

Uwharrie Mountain Run 2009!

The LandTrust assisted with the 18th annual Uwharrie Mountain Run on February 9th, 2009. This spectacular event features 8, 20, and 40 mile races along the Uwharrie Trail in Montgomery County. The weather this year could not have been more perfect for the event, with blue skies



Eager runners await the start of the 20 mile race event as the sun starts to come up.

and highs nearing 70. For the Third Year, The LandTrust for Central NC was the recipient of the proceeds of the event, which showcases our unique and beautiful region. The current race organizers have handled the event for the past seven years—thanks so much to them for their great leadership on a fabulous event! We hope to see you next year, too—but be sure to register early, as this popular event filled up in less than eight minutes this year! Check it out at raceuwharrie.com.

LandTrust Names 2009 RiverDance Committee

The LandTrust for Central North Carolina announces the committee for the 9th annual RiverDance fundraiser, to be held on August 15, 2009, at the Historic Salisbury Station in Salisbury. Jessica and Nick Goodman will chair the event, assisted by Jennifer and Patrick Baker, Gwin and Matt Barr, Lynn and Robert Bertram, Ann and Bucky Cline, Nancy and Wilson Graham, Deborah and Dyke Messinger, Margaret and William Nobles, Meredith and Bryan Overcash, Addie Laurie and Richard Reamer, Heather Roberts, Liz and Rob Sawyer, Starr and Vic Shive, Jacqui and Victor Shive, Luanne and Chip Short, Carole and David Simmons, Nichole and Erron Towns, Dana and Brad Walser, Scotti and Billy Webb, Jan and Dan Williams, and Beth and Paul Woodson.

RiverDance 2008 raised over \$40,000 which has enabled The LandTrust to continue land protection efforts at the confluence of the Yadkin and South Yadkin Rivers. RiverDance is the major fundraiser for The LandTrust, and is open to the public. Please call 704.647.0302 to request an invitation. We hope to see you there!

Upcoming Excursions and Events

- **Morrow Mountain State Park Hike, Sunday, March 22nd**
Join The LandTrust for Central NC on a picnic hike at Morrow Mountain State Park on March 22nd! Enjoy the beautiful landscape views from the park while the leaves are still off! The hike will last about an hour, followed by refreshments. Please RSVP to Crystal at crystal@landtrustnc.org or by phone at (336) 633-0143.
- **Yadkin River Canoe Trip, Sunday, April 19th**
Our annual spring canoe trip is coming up soon! Please join us on Sunday April 19th for a fantastic trip down the Yadkin River. This event always fills up fast, so RSVP soon if you would like to attend, and for more information, please email Andrew at andrew@landtrustnc.org or call (704) 647-0302.
- **John Hart Book Pre-Release Event, Sunday, May 10th**
Best-selling author John Hart has graciously agreed to allow The LandTrust to again hold at the Historic Salisbury Station a pre-release event for his newest novel, *The Last Child*. John will discuss his newest book and attendees will receive a signed copy, before the actual release date of May 12th! Tickets will soon be available for purchase on The LandTrust's website, www.landtrustnc.org.
- **Annual Meeting, Date and Location TBA**
This year's annual meeting for easement donors and supporters will occur in May. Location and time TBA. Check our website for more info.
- **RiverDance 2009, Saturday, August 15th**
Save the Date! Our annual fundraising party, RiverDance, is August 15th, 2009!



*To receive updated information on LandTrust events, subscribe to our electronic newsletter by sending your e-mail address to andrew@landtrustnc.org. Or check our Web site

Possible Benefits of Planned Giving

The LandTrust is a private, non-profit organization and relies upon the generous gifts of its members. While you may be passionate about our work, you may also feel limited in the amount of financial support you can offer. Due to current economic conditions, you may worry about outliving your resources and that a charitable donation might impact your financial security. Or you may be unwilling to do anything that could reduce the size of the estate you'll pass on to a spouse or heirs.

Fortunately, there are other ways to donate besides outright gifts of cash. If you have non-income producing assets such as stock, houses, or commercial real estate, there may be opportunities to turn such assets into income producing assets while at the same time avoiding capital gains taxes and helping The LandTrust for Central NC. Such planned giving strategies are called charitable trusts.

There are several types of charitable trusts, and some of them are particularly

attractive right now for certain situations due to low interest rates. The "charitable remainder trust" described earlier may be attractive to persons who have had other income sources cut.

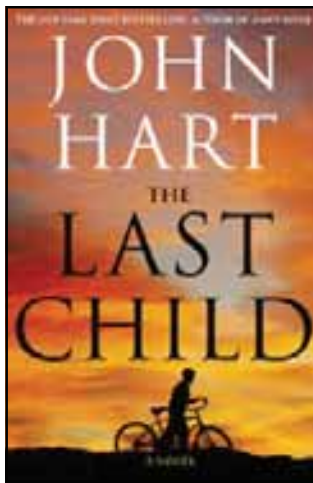
There are many different ways that persons interested in supporting our work can use planned giving to leave a perpetual legacy of conservation in NC's heartland. Please call Jason Walser at The LandTrust or your trusted financial advisor for additional information on such opportunities.



John Hart's Third Novel Set to Be Released This Spring!

The LandTrust is pleased to announce that best-selling author John Hart will be honored at a reception at the Historic Salisbury Station on Sunday May 10th. John will discuss his latest novel, *The Last Child*. Once again, John is allowing The LandTrust to hold a pre-release event, as the actual release date is May 12.

John's New York Times bestselling debut, *The King of Lies*, was widely acclaimed as a suspenseful, poignant literary thriller. His second novel, *Down River*, surpassed his earlier success, transcending



the barrier between thriller and literature and winning the 2008 Edgar Award for best novel. Now, with *The Last Child*, he achieves his most significant work to date, an intri-



cate, powerful story of loss, hope, and courage in the face of evil.

All funds raised from this event will benefit the work of The LandTrust. Additional event details will be listed on The LandTrust website (www.landtrustcnc.org), and invitations to the event will be mailed in early April. We hope to see you there for this one of a kind event!

LandTrust Opens Second Creek to Canoers and Kayakers



Second Creek is one of the main waterways in Rowan County. Now canoers and kayakers can enjoy the stretch of Second Creek from the U.S. Highway 601 Bridge to the confluence with the South Yadkin River, thanks to The Woodson Foundation, The LandTrust, and the encouragement of paddler Jeff Morris.

On the weekend of November 22nd a private contractor hired by The LandTrust cleared major brush and debris from this stretch of the creek, which borders the Alcoa Gamelands. The project opens about a 1.3 mile stretch of Second Creek to public recreation. This marks the first phase in what we hope will be a multi-phase project, making Second Creek navigable from U.S. Highway 70 to the South Yadkin, a distance of over seven miles.

“The LandTrust is committed to providing public recreation opportunities to the people of our region,” says Jason Walser, executive director. “The ‘Second Creek Clean-up’ is the latest in a series of projects, including Dunn’s Mountain Park and the Eagle Point Nature Preserve, in which The LandTrust has played a key role in opening some of our region’s best natural areas to the people of central North Carolina. And because this project was made possible by the assistance of a private donor, it demonstrates the tremendous impact any single person can have in preserving and promoting our natural resources when teamed with the resources of The LandTrust.” Anyone interested in financial support of this project is invited to contact The LandTrust at 704-647-0302.

Thanks To Our Supporters!

Your donations will allow us to continue "Saving the Places You Love" in the Piedmont Region. The following are **new** or renewing members from **January 1, 2008** through **March 10, 2008**. Every effort has been made to ensure that these names are correct. Should there be an error, or if you have questions or comments, please contact us at (704) 647-0302. Thanks for supporting The LandTrust!

Heartland 100 (Golden Oak) **\$5,000 and up**

Mr. R. Jeep Bryant
Dr. and Mrs. Charles F. Floyd
Ms. Amy Grissom
The Mary Shaw Love May Family Foundation
The Estate of Dorothy Dial Nicholson
The Estate of Lucille Proctor Norvell
Mr. and Mrs. Mark C. Ritchie
Mr. and Mrs. Fred Stanback Jr.
Mr. and Mrs. William C. Stanback
The Margaret C. Woodson Foundation

Heartland 100 (Maple) **\$2,500 - \$4,999**

Mr. and Mrs. Edward Henry Clement
Mr. Peter W. Hairston
Locust Lumber Company Inc.
Mr. Rednecheck
G. W. Smith Lumber Company
Walser Technology Group
Mary and Elliott Wood Foundation

Heartland 100 (Dogwood) **\$1,000 - \$2,499**

Mr. and Mrs. Andrew James Abramson
Ms. Frances Cannon
Mr. and Mrs. Ronald E. Chaney
Mr. and Mrs. Larry Cloninger
Community One Bank
Mr. and Mrs. Robert L. Cook Jr.
Mr. Robert L. Cook Jr.
Mr. and Mrs. Darryl Keith Corriher
Mr. and Mrs. John J. Davis
F&M Bank
The Fisher Companies
Dr. and Mrs. Keith Gatlin
Global Contact Services
Ms. Ruth Ann Grissom and Dr. Marcus Plescia
Mr. and Mrs. Robert G. Hazen
Dr. and Mrs. Walter B. Holland
Mr. and Mrs. Gordon Pannill Hurley
Mr. and Mrs. James Franklin Hurley III
Ketner and Dees, Attorneys
The Glenn E. and Addie G. Ketner Family Foundation
Mr. and Mrs. John Harris Morrison, Jr.
Mrs. Vivian R. Penry
Piedmont Natural Gas Foundation
Power Curbers, Inc.
Reamer's Equisport

Mr. Bruce Rufty
Shaver Wood Products
Silver Eagle, LLC
Mr. and Mrs. Ernest Hayes Smith
Mr. and Mrs. Tom E. Smith
Mr. Bradford G. Stanback and Ms. Shellie Lodge-Stanback
Statewide Title Inc.
Taylor Clay Products Inc.
Uwharrie Mountain Run
Wallace Realty Company
Ms. Sue Carter Walser
Mr. and Mrs. Mike Walter
Mr. and Mrs. James G. Whitton
Woodson Sayers Lawther Short Parrott Walker & Abramson

\$500 - \$999 (Benefactor)

Anonymous
Bank of North Carolina
Mr. and Mrs. John Bates
Mr. and Mrs. Ronald Bryant
Busby and Webb, Orthodontics
Central Park NC
Mr. and Mrs. Addison Davis
First1Bank
Mr. and Mrs. Chalmers L. Glenn
Mr. and Mrs. Sanders Emerson Goodman
Mr. Glenn E. Hudson and Dr. Jennifer G. Hudson
Mr. and Mrs. John Lipscomb
Mr. and Mrs. James R. Mauney
National Starch and Chemical
Paws in the Park
Mr. and Mrs. John McCrary Parrott
Mr. and Mrs. Robert S. Segal
Mr. Bobby C. Sheets
Dr. Mark T. Stanback and Ms. Nancy Popkin
Mr. and Mrs. Terrell E. Stevens
SunTrust Bank
Mrs. Edward Tennent Taylor
Mr. and Mrs. Harrison H. Thurston
Colonel and Mrs. Ray-Kent Troutman
Mr. and Mrs. Jason A. Walser
Ms. Lydia Williams

\$250 - \$499 (Patron)

Dr. and Mrs. Norman Hurst Bertels
Dr. and Mrs. Robert Bertram
Mr. and Mrs. Steve Blount
Mrs. Charles E. Brady
Ms. Jane Braswell and Mr. Frank Skinner
Mr. and Mrs. Gil Burnette

C. S. Bradshaw Construction Company
Mr. and Mrs. David S. Clay
Mr. and Mrs. Donald Clement III
Cline's Landscaping & Lawnware
Honorable Lorene Coates
Mr. and Mrs. C. B. Crook, Jr.
Davidson Surveying and Mapping PC
Mr. and Mrs. Samuel F. Davis Jr.
Mr. Nereus C. English III
Mr. and Mrs. N. J. Errante
Mr. and Mrs. Luke C. Fisher
Dr. and Mrs. Charles F. Floyd
Dr. and Mrs. Robert Glassgow
Mr. and Mrs. Cress E. Goodnight III

Grace Lutheran Church

Dr. and Mrs. Dennis L. Hill
Iredell County Farm Bureau
Mr. and Mrs. Phillip J. Juneau
Sarah C. Kellogg
Lazy 5 Veterinary Clinic
Dr. Deborah M. Lucas and Mr. Richard Lewis
Ms. Ruth L. Meade
Mrs. John Harris Morrison
Ms. Kristopher Pickler
Mr. and Mrs. William Pitt
Mr. and Mrs. William P. Pope
Mr. and Mrs. Robert E. Pruehsner
Mr. and Mrs. John G. Riley
Ramsay Burgin Smith, Architects
Mr. and Mrs. Bruce A. Sanborn
Mr. and Mrs. Barry Victor Shive
Mr. and Mrs. David Simmons
Reverend George R. Slaton
Mr. and Mrs. Edward V. Smith
Snow Benefits Group
Ms. Elaine Steele
Mr. and Mrs. Dennis Testerman
The Timberlake Foundation
Mr. and Mrs. Kenneth Vaughn
Mr. and Mrs. Darryl L. Wagoner
Mr. and Mrs. E. William Wagoner
Dr. and Mrs. John C. Webb
Dr. and Mrs. Jon Welch
Ms. Mary L. T. Williams

\$100 - \$249 (Sustaining)

Mr. and Mrs. Milton Reid Acree
Mr. and Mrs. Gregory Alcorn
Mr. and Mrs. Jake F. Alexander
Mr. Thomas A. Allison
Mr. and Mrs. Joseph F. Antosek III
Mr. and Mrs. Stephen M. Antosek
Mr. and Mrs. Robert Reece Bailey
Mr. and Mrs. Ralph L. Baker
Mr. and Mrs. Oscar Brooks Barnhardt
Mr. and Mrs. Michael Stephen Bauk

Mr. and Mrs. Clarence B. Beaver Jr.
Honorable and Mrs. R. Marshall
Bickett
Mr. and Mrs. Edward Birkinshaw
Dr. and Mrs. J. Michael Bitzer
Dr. and Mrs. Wilbert W. Blackman
Mr. and Mrs. Malcolm B.
Blankenship Jr.
Mr. and Mrs. Shaun Brixey
Mr. and Mrs. Edward Addison
Brown
Dr. and Mrs. John H. Bumgarner
Dr. and Mrs. David Scott Burton
Colonel John S. Cadwallader
Mr. and Mrs. Summersett Carter
Mr. and Mrs. G. Boon Chesson
Mr. and Mrs. Andrew Chmiel
Mr. Donald Clement Jr.
Mr. and Mrs. Willie L. Clement III
Mr. and Mrs. Thomas Coble Jr.
Mr. and Mrs. Raymond Durwood
Coltrain
Dr. and Mrs. Steven Colwell
Mr. and Mrs. Carl Coulthard
Mr. and Mrs. William S. Coxe
Dr. and Mrs. John R. Crawford III
Mr. and Mrs. John W. Dees II
Mr. and Mrs. Jay W. Duke
Mr. and Mrs. J. Michael Dunham
Mr. and Mrs. Charles Elliott
Mr. and Mrs. Jim Foltz
Dr. and Mrs. Donald R. Fortner Jr.
Mr. and Mrs. James F. Fowler
Mr. David P. Frame
Mr. and Mrs. Richard D. Franklin
Mr. and Mrs. Tyler Frick
Dr. and Mrs. Robert Gaither
Mr. and Mrs. Tomme T. Gamewell
Mr. and Mrs. Keith Gapen
Mr. and Mrs. Dale E. Gentle
Mr. Joseph N. C. Girdler
Mr. and Mrs. George D. Glover
Godley's Garden Shop
Ms. Adele Marie Goodman
Mr. and Mrs. Francis Edward
Goodman
Mr. and Mrs. Richard Park Goodman
Mr. and Mrs. Cress Edward
Goodnight Jr.
Mr. and Mrs. William Goodnight
Dr. and Mrs. Joel S. Goodwin
Mr. and Mrs. James Beall Graham
Mr. and Mrs. William Marc Graham
Mr. and Mrs. Wilson Graham
Mr. and Mrs. B. Alex Grenoble
Ms. Margaret Grigg
Mr. and Mrs. David N. Hall
Ms. Rachel Hamilton
Dr. and Mrs. James R. Hardin
Mr. and Mrs. Joel Harper
Mr. and Mrs. Robert W. Harris
Mr. and Mrs. T. Burt Harris
Mr. and Mrs. M. Thomas Hatley Jr.
Mr. and Mrs. John Max
Henderlite, Jr.
Dr. and Mrs. O. Jerry Hill Jr.
Mr. and Mrs. Owen R. Hill
Mr. and Mrs. Paul R. Hinkle
Mr. and Mrs. John E. Hlavacek

Mr. Harlie J. Hoke
Mrs. Catherine Green Holladay
Mr. William E. Hollan Jr.
Mr. and Mrs. Jason C. Holt
Mr. David W. Hoyle III
Ms. Jennifer Hubbard and
Mr. Steven Cobb
Mr. and Mrs. Joel Hubbard
Mr. and Mrs. Richard Long
Huffman
Mr. and Mrs. Joseph T.
Inglefield III
Mr. and Mrs. William Robyn
James
Mr. and Mrs. Archibald Leroy
Jarrell III
Dr. and Mrs. Andrew Jeter
Dr. and Mrs. Atlee Rollins
Johnson III
Dr. and Mrs. James C. Johnson
Mr. and Mrs. Harley H. Jones
Mr. and Mrs. Larry O. Jones
Dr. and Mrs. Richard D. Jordan
Mr. and Mrs. William K. Kepley
Mrs. Alice Hudson Ketcham
Mrs. Glenn Elwood Ketner Sr.
Mr. and Mrs. George Fisher Kluttz
Ms. Anna Lois Knox
Mr. and Mrs. Robert H. Knox III
Mr. and Mrs. Kenneth Kolkebeck
Mr. and Mrs. Earle Koontz
Mr. and Mrs. Marcus D. Koontz
Mr. Richard Lang
Dr. and Mrs. Raymond L. Lassiter
Mr. and Mrs. Herbert L. Lawton
Ms. Sarah B. Ledbetter
Mr. and Mrs. John F. Lentz
Dr. and Mrs. Mark Lins
Mr. and Mrs. John F. Lipe
Dr. and Mrs. Bobby A. Lomax
Mr. and Mrs. Robert F. Lowe
Mr. and Mrs. Thomas MacMillan
Mr. and Mrs. Joseph R. McDonald
Mr. and Mrs. Jeffrey D. Michael
Mr. and Mrs. Clyde B. Mickle Jr.
Mr. and Mrs. Kent Miller
Mr. and Mrs. Peter J. Mooney
Mr. and Mrs. Johnny C. Moore
Mr. and Mrs. Timothy R. Moore
**Mr. and Mrs. Kenneth Dale
Nelson**
Mrs. Edwin Overman Norvell (d)
Mr. and Mrs. Edward Proctor
Norvell
Mr. and Mrs. Enoch Anthony
Nussman
Ms. Alisa Palmer
Dr. and Mrs. Gary H. Parks
Mr. and Mrs. Charles A. Peacock
Mr. and Mrs. Dewey Peck
Mr. and Mrs. John T. Peeler
Mr. Brian Pfaff
Dr. W. Gaston Penry Jr.
Ms. Barbara T. Perzel
Mr. and Mrs. Branson A. Pethel
Mr. Eugene B. Pickler
Mr. James S. Plant
Mr. and Mrs. Keith A. Powlas
Mr. and Mrs. David L. Pressly, Jr.

Mr. and Mrs. Richard Rankin
Reamer
Dr. and Mrs. Richard A. Reitz
Mr. and Mrs. .Chancellor M.
Reynolds
Dr. and Mrs. John O. Reynolds, Jr.
Mr. Kent Roberts
Mr. Roger Robbins
Mr. and Mrs. T. Clinton Robins
Mr. and Mrs. Bobby L. Rusher
Mr. John Bruce Safrit
Mr. and Mrs. Bruce A. Sanborn
Mr. H. Gregory Scarborough
Mr. and Mrs. Michael Shadroui
Mr. and Mrs. David C. Shaver
Mr. and Mrs. Charles P. Sherrill
Mr. and Mrs. B. Victor Shive
Mrs. Susan G. Sides
Mr. and Mrs. Ian Silversides
Dr. Bethany Strong Sinnott
Dr. and Mrs. Norman R. Sloop
Mr. and Mrs. Dan Griffith Smith
Mr. George E. Smith
Dr. and Mrs. Ronald D. Smith
Mr. and Mrs. Walter L. Smith
Dr. and Mrs. Whitman E.
Smith Jr.
Mr. and Mrs. Clifford D. Sorel
Mr. and Mrs. Maxwell K.
Spear, Jr.
Dr. and Mrs. Robert Gibson Steele
Dr. and Mrs. Charles Steinman
Mr. and Mrs. Smith Stokes
Mr. and Mrs. Andrew Storey
Mr. and Mrs. Ned A. Storey
Mr. and Mrs. David W. Swaim
Mr. and Mrs. Robert Kenneth
Taylor
Dr. and Mrs. Willard Ray
Thompson Jr.
Mr. and Mrs. Jack Thomson
Mr. and Mrs. William Tippet
Dr. and Mrs. Erron Towns
Mr. and Mrs. Lloyd William
Troxler Jr.
Mr. and Mrs. Bill Truitt
Mr. Chris H. Verner and
Ms. Gail Poulton
Wachovia Bank
Mr. and Mrs. W. Price Wagoner II
Ms. Virginia Wall
Mrs. Louise Walser
Mr. and Mrs. R. Charles Waters
Dr. and Mrs. Hugh Boyd Watts
Dr. and Mrs. William W. Webb III
Mr. and Mrs. Paul Weisler
Mr. and Mrs. Henry H.
Westmoreland
Mr. and Mrs. J. Jay Whittington
Ms. Shelley Williamson
Mr. and Mrs. Alfred Wilson
Dr. Amy E. Wilson and
Mr. Benjamin T. Ott
Dr. and Mrs. Edwin Wilson
**Mr. and Mrs. Thomas Eugene
Wilson**
Mr. and Mrs. Robert Wright
Dr. and Mrs. Steve W. Yang
Mr. Braxton Young

\$50 - \$99 (Family)

Mr. Wayne L. Abercrombie
Mr. and Mrs. Robert L. Baker Jr.
Mr. and Mrs. Jerry Barger
Mr. and Mrs. Rick Barrier
Ms. Gwen Beavans
Mr. and Mrs. Clarence B.
Beaver III
Mr. and Mrs. Kent Beck
Mr. and Mrs. David P. Bendert
Mr. Rex R. Boner
Mr. and Mrs. Owen Bradford
Boone
Mr. and Mrs. Nelson M. Bradshaw
Mr. and Mrs. Benjamin H.
Bridges III
The Honorable Charles E. Brown
and Ms. Emily Ford
Mrs. M. E. Bullard
Mr. and Mrs. William R. Burgin
**Mr. Donald and Mrs. Sonya
Burton**
Dr. and Mrs. Thomas Kern
Carlton Jr.
Mr. and Mrs. John R. Casey
Mr. and Mrs. Thomas C. Childress
Mr. and Mrs. Len Clark
**Mr. and Mrs. John M.
Clemens, Jr.**
Mr. and Mrs. Kenneth Clifton
Mr. and Mrs. Melvin Glenn Cline
Mr. and Mrs. Wayne M. Cline
Mr. and Mrs. Allen DuBose Cook
Reverend Cathy A. Cook and
Mr. Kenneth E. Criffield
Mr. David Correll
Mr. and Mrs. Allen K. Craven
Mrs. Fred T. Craven
Mr. and Mrs. Rodney Cress
Mr. and Mrs. Reginald B. Dailey
**Mr. and Mrs. James Radford
Davis**
Mrs. Jamima P. DeMarcus
Mr. and Mrs. Richard Gregory
Dunn, Jr.
Ms. Tammy M. Dunn
Mr. Frank Dusch
Ms. Barbara C. Earnhardt
Mr. and Mrs. Eugene F. Earnhardt
Mr. and Mrs. J. Robert Edwards
Ms. Digna Freirich
Mr. and Mrs. C. Layton Getsinger
Mr. and Mrs. Edgar W. Gettys
Mr. and Mrs. Ezra C. Gilliam
Mr. and Mrs. Joseph R. Godwin
Dr. and Mrs. Myron Arthur
Goodman
Mr. and Mrs. Walter Gordon
Dr. and Mrs. Gordon A. Grant III
Mr. and Mrs. Rhett E. Greene
Mr. and Mrs. William C. Grubb
Mr. David A. Hannah and
Ms. Laurie McDade
Mr. Clyde H. Harriss Jr.
Mr. and Mrs. Jerry R. Harviel
Mr. and Mrs. John Highfill
Mr. and Mrs. Robert C. Hinkle Jr.
Mrs. Hoyle N. Holland
Ms. Diane Dillon Hooper

Mr. John Isenhour
Mr. and Mrs. William C. Isenhour
Mr. and Mrs. Brian Kautz
Mr. and Mrs. Jack S. Kepley
Mr. and Mrs. Timothy Klaus
Mr. Charles Lane
Ms. Kimberly Lane
Mr. and Mrs. Larry R. Layton
Mr. and Mrs. Mark N. Lewis
Mr. and Mrs. John G. Lewis Jr.
Mr. Randolph Lewis and
Ms. Abigail Jennings
Dr. and Mrs. Robert M. Lewis
Dr. and Mrs. Richard V. Liles, Jr.
Reverend and Mrs. I. Mayo Little
Mr. and Mrs. Thomas R.
MacMillan
Mr. and Mrs. Ross William
McCanless
Dr. and Mrs. Richard W. Martin
Mr. and Mrs. Tim McCree
Mr. and Mrs. Richard J. McGuire
Mr. and Mrs. Joseph C. Morris
**Mr. and Mrs. Dean Michael
Naujoks**
Mr. and Mrs. Harold Hastings
Newman III
Dr. and Mrs. Leon B. Newman
Mr. and Mrs. James Norman III
**Mr. and Mrs. Douglas T.
Paris, Jr.**
Mr. and Mrs. John T. Peeler
Mr. Glenn H. Peninger Jr.
Ms. Barbara T. Perzel
Mr. and Mrs. Mark Braswell Perry
Mr. and Mrs. Andrew Pitner
Ms. Elizabeth Carrington Poole
Ms. Janice Query
Mr. and Mrs. Ray D. Raymer Jr.
Mr. and Mrs. Ray Raymer
Mr. and Mrs. James J. Reilly
Mr. and Mrs. Charles E. Roe
Mrs. Hans Roemer
Ms. Nancy Ruppert
Mr. and Mrs. Bobby Rusher II
Mr. and Mrs. David E. Setzer
Mr. and Mrs. Larry Shaw
Mr. and Mrs. D. Wayne Shepherd
Ms. Eleanor E. Sifford
Mr. and Mrs. Terrence W. Sippel
Dr. and Mrs. David N. Smith
Dr. and Mrs. James A. Smith
Mr. and Mrs. Ronald L. Smith
Mr. and Mrs. Charles L. Sowers
Mr. and Mrs. James Anderson
Sparks Jr.
Mr. and Mrs. J. Michael Strother
Mr. and Mrs. David W. Swaim
Mr. and Mrs. Wilborn S. Swaim
Arlene Edwards Thompson
Mr. and Mrs. Charles R. Thurston
Mr. and Mrs. Darryl L. Wagoner
Dr. and Mrs. Harry G. Walker
Dr. John E. Wear, Jr.
Mr. and Mrs. Donald C. Webster
Mr. and Mrs. Alfred F. Welling, Jr.
Mr. Henry H. Westmoreland
Reverend and Mrs. Jerry P. Wilkes
Mr. and Mrs. Geof Wilson

Mr. and Mrs. Norde D. Wilson
Dr. and Mrs. Robert W. Wilson

\$35 (Individual)

Mr. and Mrs. John G. Annas
Mr. and Mrs. P. Collins
Barwick III
Ms. Ann Coughenhour Boyd
Mr. and Mrs. Charles S. Brummitt
Mr. Wayne M. Cline
Mr. Frank Dusch Jr.
Mr. Jimmy Forrest
Miss Lillian Heitman Gascoigne
Ms. Martha Lou Heitman
Gascoigne
Mr. and Mrs. Douglas Glasgow
Mr. and Mrs. Charles H. Goldman
Mr. Hoyt Hackney
Mrs. Dolores A. Hall
Mr. and Mrs. Wesley Hartsell
Mr. and Mrs. John W. Helms
Mr. and Mrs. William Hiatt
Ms. Nancy C. Holshouser
Ms. Bunny V. Howell
Mr. and Mrs. Gary M. Kenny
Mr. Kenneth B. Knight
Mr. Maximilian Atlas Merrill
Mr. David Mickey
Mr. and Mrs. Paul Rush Mitchell
Mr. and Mrs. Joe F. Morgan
Dr. and Mrs. John B. Murphy
Mrs. Sally G. Murphy
Ms. Florence B. Peck
Dr. and Mrs. Leon C. Peele III
Ms. Vicki M. Poindexter
Mrs. Doris Porter
Mrs. Louise Johnson Price
Miss Heather Bell Roberts
Mr. and Mrs. Roger Leon Ross
**Mr. H. Deal Safrit and
Dr. Sheila E. Brownlow**
Mrs. Eleanor Sandifer
Ms. Joan R. Scott
Dr. Jonathan Shaw
Reverend and Mrs. Banks D.
Shepherd
Mr. Eric Slipp
Ms. Betty Bonner Steele
Ms. Elaine Stiller
Ms. Anne Wall Thomas
Ms. Tracy Tripp
Mr. Jim Tucker
Mrs. Robert Randolph Turner III
Ms. Louise R. Walser
Mr. and Mrs. E. Stephen Watson
Dr. Martha Kirkland West
Ms. Jean M. Wurster
Ms. Jewel W. Ziprik

\$25-\$35

Mr. and Mrs. Mark Stuart Alley
Mr. and Mrs. Benjamin T. Beaver
Mrs. Ruby M. Beeker
Mr. and Mrs. Harold W. Buchanan
Mr. and Mrs. Ross W. Mayes
Mr. and Mrs. William L. Noel III
Ms. Vicki M. Poindexter
Mr. Harley R. Smith
Mr. and Mrs. Charles R. Thurston
Dr. and Mrs. Harry G. Walker

Stewardship

Ms. Allison Clark
Mr. David Clark
Mr. Walter Clark
Cochran Estates
Mr. Keith Gatlin
Mr. Ezra Gilliam
Mr. James Gray
Mr. John Holton
Ms. Caroline Clark Morrison
Ms. Carla R. Pense

Honorariums

IN HONOR OF SUE WALSER
by Ms. Kathryn Conrad
Mr. and Mrs. Ned A.
Storey
Ms. Sarah G. Borders

*IN HONOR OF WAYNE COOK
AND PAIGE HELMS*
by Reverend Cathy A.
Cook and Mr. Kenneth
E. Criffield

IN HONOR OF JAMES GILMAN
by Mr. Paul Garrick

*IN HONOR OF JASON A.
WALSER*
by John Knox Chapter,
DAR,
Lake Badin Associates

*IN HONOR OF BARBARA
LAWTHER*
by Lexington Women's
Club

*IN HONOR OF THE ANDREW
ABRAMSON FAMILY*
by Mr. and Mrs. Brad
Walser

*IN HONOR OF COOLEEMEE
PLANTATION*
by Ms. Lydia Williams

*IN HONOR OF MR. AND MRS.
GERALD C. BROOMSTEAD
MR. AND MRS. ROBERT W.
STAMEY
MR. AND MRS. DAVID L.
PRESSLY, JR.
HONORABLE AND MRS.
ROBERT A. COLLIER, JR.
MR. AND MRS. ROBERT O.
EBERT
MS. REBECCA G. KIRKMAN
MS. SARAH G. BORDERS
MR. AND MRS. ROBERT L.
COOK, JR.
MR. AND MRS. NED ALTON
STOREY
MR. AND MRS. LAYTON
GETSINGER
MS. ELAINE STEELE*
by Ms. Sue Carter Walser

Memorials

*IN MEMORY OF LUCIUS PERRY
BELL III*
Annette Bell Roberts

*IN MEMORY OF MARTHA
HUGHES DUSCH*
Mr. Frank A. Dusch

*IN MEMORY OF PETER WILSON
HAIRSTON*
Ms. Betty Hairston

*IN MEMORY OF DR. CULLEN
HALL*
Ms. Catherine Hall

*IN MEMORY OF ALLENE
HAMILTON, ELIZABETH
SCHOFIELD,
SARAH HARMON, DANNY
MCQUEEN AND JACK
EDWARDS*
Mr. Jim Tucker

*IN MEMORY OF OSCAR AND
RUBY HELMS*
Mr. and Mrs. Mark Helms

IN MEMORY OF ANDREW R. HILL
Mr. and Mrs. Owen R. Hill

*IN MEMORY OF HOYLE
HOLLAND*
Mrs. Hoyle M. Holland

*IN MEMORY OF GLENN
ELWOOD KETNER, SR.*
Mrs. Glenn Elwood
Ketner, Sr.

*IN MEMORY OF D.C. AND FRAN-
CES LINN*
Mr. Peter W. Hairston
Mr. and Mrs. Charles
Peacock

*IN MEMORY OF WILLIS "BUD"
SHELLHORN*
Ms. Rosa Boyd
Mr. Joe Blake
Mrs. M. E. Bullard
Mr. Floyd Burton
Mr. David Cort
Ms. Alana Ducker
Mr. James Freeman, Dr.
and Mrs. Donald Fortner
Mr. and Mrs. Tomme T.
Gamewell
Mr. and Mrs. George D.
Glover
Godley's Garden Center
Mr. and Mrs. John Van
Hanford, Jr.
Mr. and Mrs. Robert W.
Harris
Mr. and Mrs. Ronald E.
Owen
Mr. and Mrs. Arthur W.
Pinkston
Mr. and Mrs. John William
Roderick

Rowan Diagnostic Clinic
Rowan Regional Medical
Center
Dr. Ranjan Roy
St. John's Lutheran Church
Dr. and Mrs. Charles
Steinman
Mr. and Mrs. Terry M.
Swaim
Mr. and Mrs. Russell
Vaughn
Mr. and Mrs. Jason A.
Walser

*IN MEMORY OF DR. AIDAN
SINNOTT*
Dr. Bethany Strong
Sinnott

*IN MEMORY OF NEAL SMITH
AND HANK PALMER*
Mr. Hall Steele

*IN MEMORY OF VIRGINIA HOLT
SPAKE*
Mr. Angelo P. Capparella

*IN MEMORY OF ELWOOD
SUTTER*
Colonel and Mrs. Ray-
Kent Troutman

IN MEMORY OF BILL WALKER
Sue Carter Walser

*IN MEMORY OF ALBERT F.
WALSER*
Mr. John L. Petrie and
Ms. Anna Rufty-Petrie
Mr. and Mrs. Ned A.
Storey

*IN MEMORY OF ALFRED F.
WELLING, JR.*
Mr. and Mrs. Wayne
Brooks
Mr. and Mrs. W.
Leighton Carmichael
Ms. M. Frances Crowell
Design Research Group
P.A.
Dr. and Mrs. Charles R.
Fernandez
Mr. and Mrs. Paul M.
Griffith
Dr. Matt Gromet
Mr. and Mrs. Lester K.
Howard
Ms. Hilda W. Lee
Mr. and Mrs. Joe T.
Millsaps
Mr. Thomas Phillips
Mr. and Mrs. George
Stilwell
Mr. and Mrs. William
Vandiver
Ms. Jackie Walsh
Ms. Delores B. Welling
Ms. Dorothy S. Welling
Ms. Elizabeth Wilson

Conservation Connection— “A True Landscape Artist”

When most people look at the clear-cut adjacent to my driveway, they don't exactly see possibility. But that's precisely what I do see when I look at it. This area presents itself as a blank canvas – a chance to create.

While artists use a literal canvas and paintbrushes, the art of landscape design requires tools of a different kind. Prescribed fire is my paintbrush. A bushhog and trackhoe are my artist's implements. Although these tools may leave the landscape black and destitute initially, the end result of restoration efforts will be scenery beautiful beyond measure, literally alive with wildlife and vegetation, and figuratively with color and depth.

The piedmont prairie that is being restored by these artistic efforts will house native grasses and wildflowers. Purples and oranges and yellows of unique blooms – Indian paintbrush, Georgia aster, and sunflowers will grace the restored landscape. The tufts of little and big blue stem grasses, and Indian grass gently stirred by the wind. And the animals that inhabit this restored landscape bring their own beauty



A friendly visitor in the front yard.

and charm - the ornate woodducks that nest on the created ponds, the speckled quail in the prairie, and the strutting turkeys in the forest. I watch marbled and spotted salamanders live out their life cycles in the ephemeral wetland areas. The intricacies of these ecosystems on both a small and large scale, as they make their transition from disturbed to restored, reveals that beauty truly is in the eye of the beholder. And for the plants and wildlife who utilize these areas, even transition itself has a splendor of its own.

-Mark Lewis, volunteer/easement donor, as told to & written up by LandTrust staff.



One picturesque glimpse of the diversity of ecosystems found on the property, which includes riparian areas, mature hardwood forests, wetlands, ponds, prairies, and more.

Board Member Profile

Edward Norvell

Conservationist, preservationist, philanthropist, fund-raiser, planner, author—these are just a few of the words that describe Edward P. Norvell. Here at The LandTrust we just call him when we need him, which is often. Edward rejoined our Board in 2008 after taking a sabbatical due to other commitments. After a term as vice president, he now chairs our Land Protection Committee, which reviews potential land conservation projects for recommendation to the Board.

Many in Salisbury and Rowan County know Edward for his civic and charitable contributions, including key board positions with the Historic Salisbury Foundation, Rowan Museum, and Downtown Salisbury, Inc. He also has been a leading fundraiser for the Meroney Theater, Rowan Museum, J.F. Hurley Family YMCA and many other groups in Rowan County. What people may not know about Edward is that he is widely considered to be one of the foremost legal experts on land conservation in the state, having served as legal counsel with the Conservation Trust for North Carolina. Currently he



is working as a legal consultant for the Clean Water Management Trust Fund. Many moons ago, he was also director of land protection with The LandTrust for Central North Carolina.

Edward and his wife, Susan, live in Salisbury and spend time on Ocracoke Island during the summer. They have two children, Phillip and Mary Linn. In his spare time, Edward loves to write and is the author of three published novels—*Southport*, *Portsmouth* and *Shadows*—as well as many short stories.

Thanks and Farewell to Michele!

Michele d'Hemecourt joined on with The LandTrust in late summer of 2005, and left us this past November headed across the country. All the way across the country, to Port Angeles, Washington! In addition to spending time hiking and running in the beautiful landscape there, Michele operates the Port Angeles Farmers' Market for Clallam County, and she also works on salmon habitat restoration projects. While at The LandTrust, Michele worked predominantly on land protection projects, working with local landowners on conservation opportunities. Some of her most notably projects include several phases of protection of the Adams Farm in Rowan and Iredell Counties, the Billy Joe Kepley Farm in Davie County, and the last project before she left, the protection of the Gilliam Farm in Rowan County.

In 2004 and 2005, Michele worked in Western Colorado for one of the first agricultural land trusts in the country. Michele's dog Lucy was also a frequent attendee of LandTrust hikes and events. We are grateful to Michele for all the hard work and service, and wish her all the best on her new adventure!



Thanks to Michele from all of us here at The LandTrust!



Heartland members take in the scenery at Low Water Bridge.



Beautiful fall foliage at Tuckertown.



Santa Claus stopped by for The LandTrust's annual tree trimming event!

THE LANDTRUST FOR CENTRAL NORTH CAROLINA

The LandTrust is a private, nonprofit organization working with private and public landowners to protect the special natural areas, family farms and rural landscapes of Anson, Cabarrus, Davidson, Davie, Iredell, Montgomery, Randolph, Richmond, Rowan and Stanly Counties. With 501 (c) (3) status, all donations to The LandTrust qualify for maximum tax deductions.

BOARD OF DIRECTORS

Dan Williams, President
Dyke Messinger, Vice President
David Simmons, Treasurer
Moni Bates
Darryl Corriher
Lindsey Dunevant
Amy Grissom
John Hart
Bill Medlin
Jeff Michael
Joe Morris
Peg Knox Morrison
Edward Norvell
John Peeler

BOARD OF ADVISORS

Joe Adams
Raymond D. Coltrain
J. Myrick Howard
John Lentz
Joseph McDonald
David Springer
Alice Stanback
Fred Stanback
William C. Stanback
Charles E. Roe
Roberts E. Timberlake

STAFF

Jason A. Walsler, *Executive Director*
Andrew Waters, *Operations Director*
Barbara Martin Lawther, *Development Director*
Crystal Cockman, *Uwharrie Conservation Specialist*



To protect and preserve the land—natural areas, rural landscapes, family farms and historic places within North Carolina's heartland.

P.O. Box 4284
Salisbury, NC 28145
704-647-0302

Non-Profit Org.
U.S. Postage
PAID
Salisbury, NC
Permit No. 111